

MONTHLY MEMBERSHIP PROGRESS REPORT

LOCATION INDIA

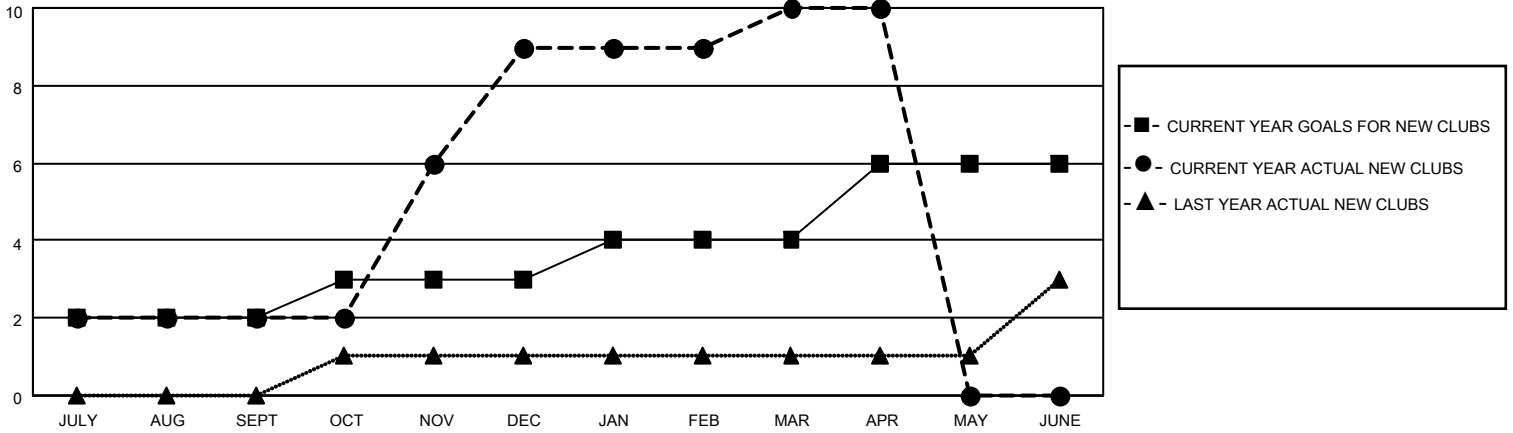
District 318 E

Results as of: 4/30/2021

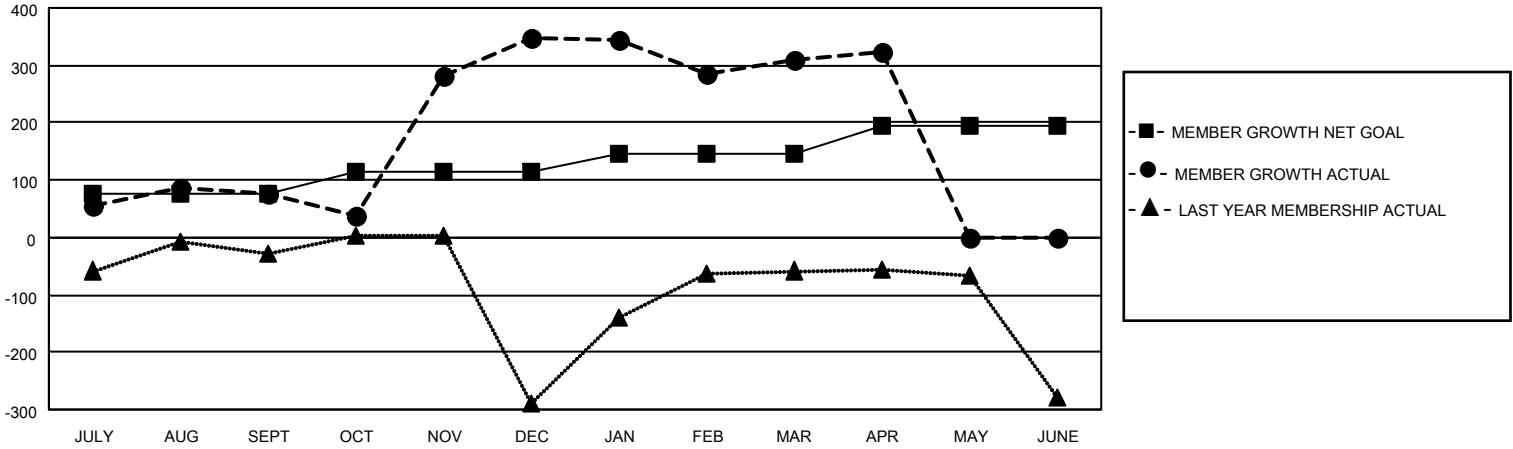
Clubs			
RESULTS FOR 2020-2021			
QUARTER	NEW CLUB GOAL	NEW CLUBS	DROPPED CLUBS
JULY/AUG/SEPT	2	2	0
OCT/NOV/DEC	1	7	0
JAN/FEB/MAR	1	1	4
APR/MAY/JUNE	2	0	0

Members			
RESULTS FOR 2020-2021			
QUARTER	MEMBER GROWTH NET GOAL	MEMBER GROWTH ACTUAL	DROPPED MEMBERS ACTUAL (including transfers)
JULY/AUG/SEPT	75	196	112
OCT/NOV/DEC	40	584	299
JAN/FEB/MAR	30	118	151
APR/MAY/JUNE	50	22	11

GOALS AND ACTUAL NEW CLUBS CUMULATIVE



GOALS AND ACTUAL MEMBERS CUMULATIVE



DROPPED CLUBS: 4

98 CLUBS OF 151 ADDED 1 OR MORE NEW MEMBERS

GENDER DISTRIBUTION

MALE 4,575 (77.16%)
FEMALE 1,354 (22.84%)

DROPPED MEMBERS

[CLICK HERE FOR CUMULATIVE MEMBERSHIP DATA](#)

DECEASED	16
CLUB CANCELLED	81
OTHER	476
TOTAL	573

TOTAL FAMILY UNIT MEMBERS	2,341
FAMILY MEMBERS PAYING HALF DUES	1,224